

Welcome

Changes for importers trading with the EU from 1st Jan 2022

16th December 2021



Greater Manchester
Chamber of Commerce



Greater Manchester Chamber of Commerce

Amy Swindells – Head of International Professional Services



Greater Manchester
Chamber of Commerce



What will be covered today?

1. Introduction to GM Chamber
2. Overview of the current rules
3. Changes as of 1st January 2022
4. What actions do you need to take
5. How can we help?
6. Q & A Session



GM Chamber at a Glance



Founded

In 1794 and became the Greater Manchester Chamber in 2004. We are the largest accredited Chamber of Commerce in the UK.



+200 Events annually

Gathering over 10,000 delegates



Award-Winning Chamber

Providing a wide range of business support services ranging from skills to international trade and more.



Global Business Network (+90 countries)

Made of more than +40 partnerships with public and private sector in the UK and overseas helping members and customers to thrive in both domestic and international markets.



10 Local Authorities

Bolton, Bury, Trafford, Wigan, Tameside, Oldham, Rochdale, Stockport, Manchester, Salford.



+4,200

Members across all sectors and sizes representing about 5% of the businesses in the region & combined workforce of circa +460,000 employees.



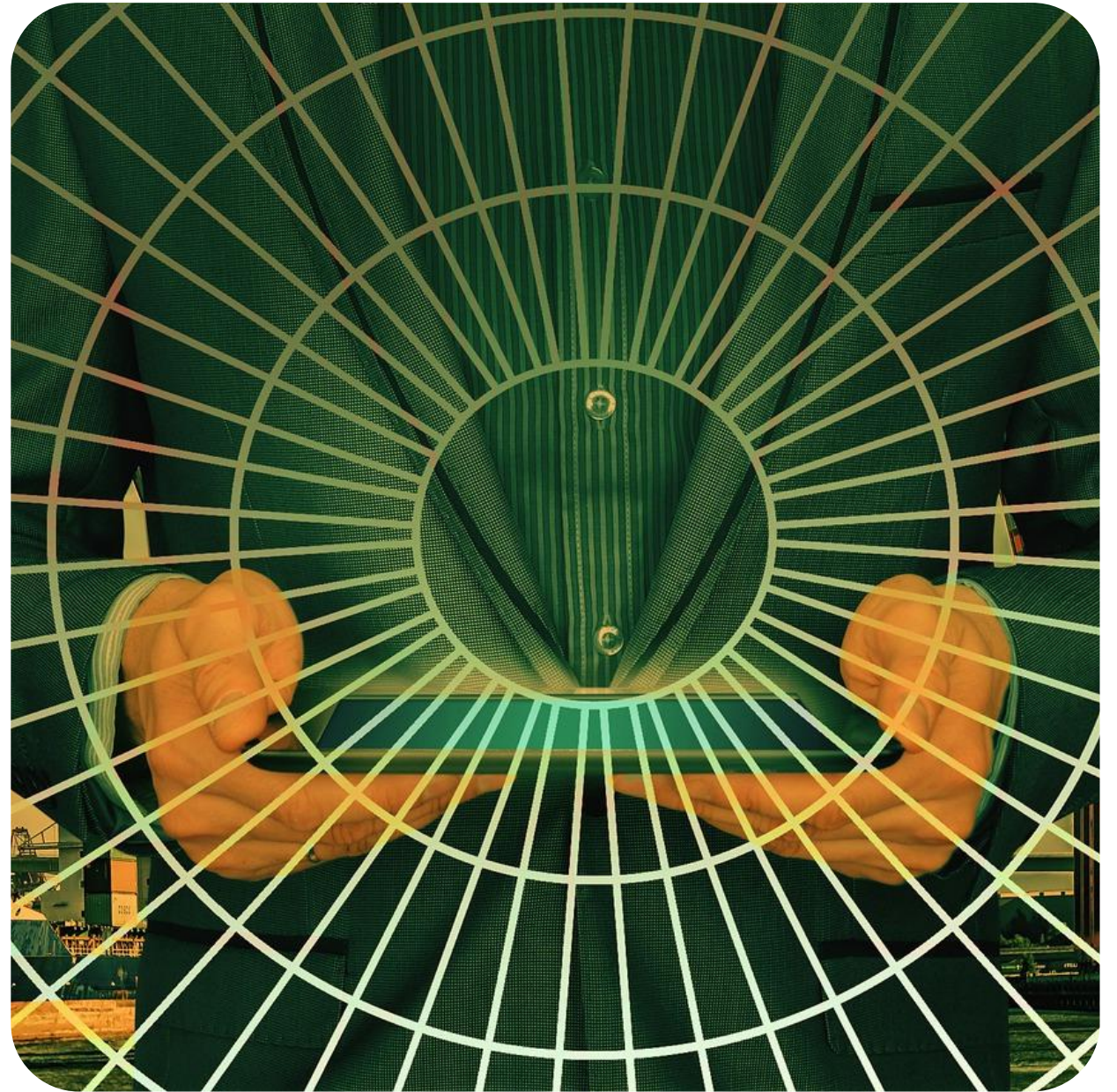
+50

Employees



Your International Trade & Customs Partner

Helping Exporters and Importers Succeed in
Global Markets



How can we support?

Our portfolio of services have been designed to support every stage of the trader's internationalisation journey.

Getting Started and Planning for Success!

1

Market Awareness
and Entry Services

2

Export and Import
Training Courses

3

Customs Compliance
Advisory Services

How can we support?

Our portfolio of services have been designed to support every stage of the trader's internationalisation journey.

Customs, Delivery and Getting Paid!

4

Documentation,
Certification,
Legalisation & Apostille
Services

5

Customs Clearance
Agent & Transit Services

6

Delivery & Getting
Paid Services

POLL NO. 1

What have you considered in terms
of customs with the EU?



1st January 2021

A staged approach to customs procedures was introduced.

Imports

- Full declarations for controlled goods
- Non-controlled can delay for up to 175 days
- Postponed VAT Accounting

Exports

- Full declarations required
- Export Health Certificates not currently required until July 2022



Changes for 2022

Moved from 1st April 2021 to 1st January 2022

- Import pre-notification for specific products required, e.g.:
 - Products of animal origin
 - Plants and plant products

1st January 2022

- Full import customs declarations required before leaving the EU
- Intrastat only required for NI to EU
- Supplier Declarations
- Commodity code changes

1st July 2022

- UK import Safety and Security declarations
- Export Health and Sanitary and Phytosanitary certificates required before leaving the EU



1st January 2022 to 30th June 2022

- Consignments can enter via any point of entry (not necessarily a Border Control Point)
- No new checks
- Transit still allowed
- Products under safeguard still require notifications



Goods Vehicle Movement Service (GVMS)

- UK Government IT platform
- Introduced for all GB ports who opted in the Temporary Storage Model (Accompanied and Unaccompanied Freight)
- Hauliers are responsible
- Foreign hauliers must register

Part of
[Brexit: business guidance](#)

Guidance

English | [Cymraeg](#)

Register for the goods vehicle movement service

If you're a haulier and move goods through a port in the UK that uses the goods vehicle movement service you'll need to register for the service to get your goods through customs.

[GVMS guidance in 10 languages](#)



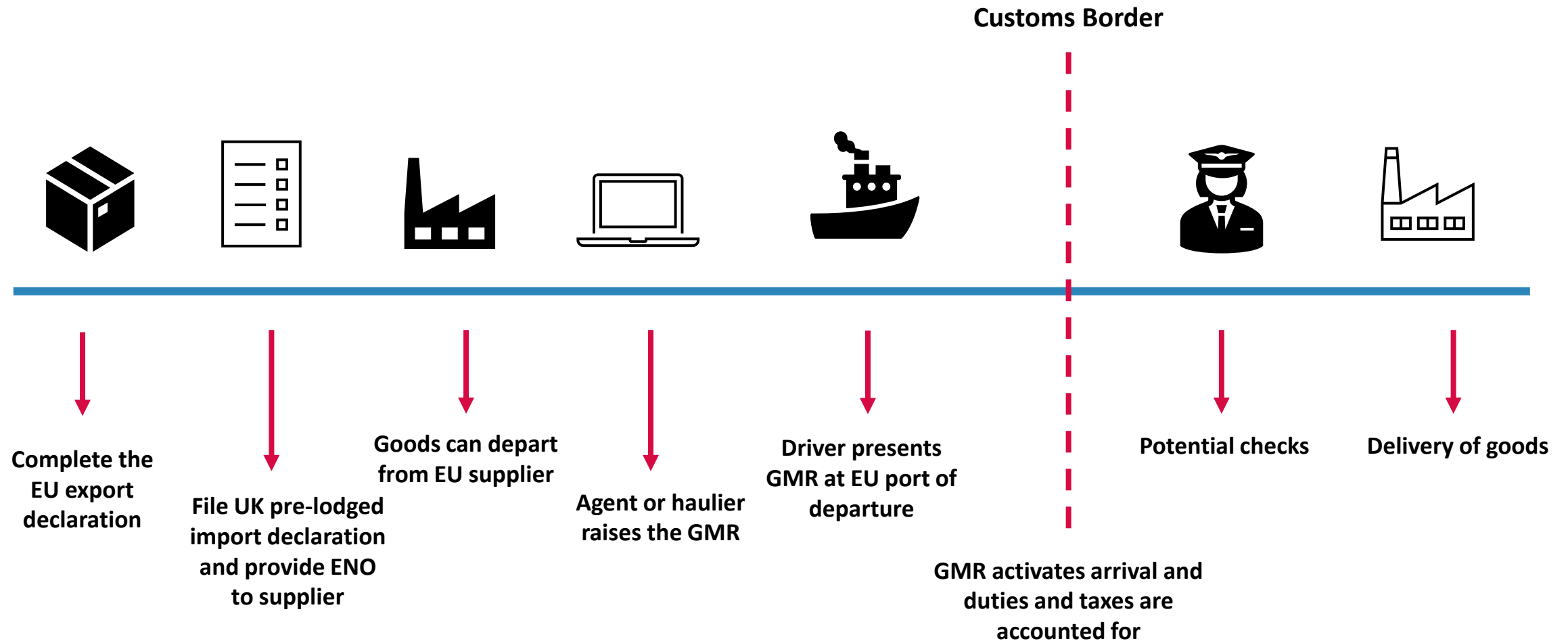
How will it work from 1st January 2022?

1. Request a pre-lodged import declaration from your agent
2. The declaration will generate an **entry number (ENO)** which will need to be sent to your freight agent or your supplier will need to send it to their freight agent
3. The UK Government have designed the **Goods Vehicle Movement Service (GVMS)** which links to the import entry number of each consignment to a specific vehicle and a **single Goods Movement Reference (GMR) number**.
4. The GVMS automates the arrival status in the UK customs system, allowing all duties and taxes to be accounted for in near real time on entering the UK.

The goods will not be able to depart the EU without the above!



Example of an import process



What do you need to do?

- ✓ Make sure you have a customs agent in place
- ✓ Speak to your European suppliers to ensure all the information required for customs purposes is in your documentation (e.g. GB EORI number, commodity codes, origin, Incoterms)
- ✓ Speak to your hauliers to make sure they're prepared
- ✓ Confirm responsibilities with suppliers, hauliers and agents



How can we help?

We can complete export and import clearances on your behalf, as well as providing transit documents.

We have direct access to all road, sea and air terminals!

Please email chambercustoms@gmchamber.co.uk or
complete our short survey for more information.

CHAMBER
CUSTOMS



Chan

Zoon

View

View

Hauli

Pre-j

Bord

Phas

custo

Trade

Trade

chambercustoms.exabler.com/home

CHAMBERCUSTOMS

powered by EXabler

0

Provider

Dashboard

Organisations

Products

Sales

Purchases

Reporting & data

My company

Guides

Dashboard

+

New trade

Summary

0

sales value (GBP equiv.)

0

sales open

0

sales closed

0

purchases value (GBP equiv.)

0

purchases open

0

purchases closed

Tour

Show me around the application

Exabler

0

Provider

Summary

0

sales value (GBP equiv.)

0

sales open

0

sales closed

0

purchases value (GBP equiv.)

0

purchases open

0

purchases closed

0:00

Online platform to submit export and import customs declarations

POLL NO. 2

Do you currently use transit/T1s?



2022 Upcoming Events

12 th January	<u>Event: Sell your products worldwide through online platforms</u>
25 th January	<u>Training: How to Complete Customs Declarations</u>
27 th January	<u>Bitesize Session: The Points-Based Immigration System</u>
27 th January	<u>Training: Understanding Tariff Codes</u>
2 nd February	<u>Training: Export Documentation</u>
10 th February	<u>Training: Inward and Outward Processing Relief</u>
24 th February	<u>Training: Exporting and Importing with the EU</u>
24 th February	<u>Training: Trading with Egypt</u>
1 st March	<u>Training: How to get Approved Exporter Status</u>
23 rd March	<u>Training: Incoterms</u>
30 th March	<u>Training: Import Procedures</u>
7 th April	<u>Workshop: UK EUR1 Step by Step</u>

To keep up with our upcoming events, please click [here](#)



Q&A



Need support?

General Export & Import Queries

exportbritain@gmchamber.co.uk; benefits@gmchamber.co.uk

Customs Clearance & Transit Services

chambercustoms@gmchamber.co.uk

T: 0161 393 4368, 4317, 4355

Documentation, Certification, Legalisation and Apostille services

exportdocs@gmchamber.co.uk

T: 0161 393 4312, 4313

T: 0161 489 3170 (Airport Office)

[For more information about our International Trade Services, click here](#)

[For Brexit Guidance, Resources and Events, visit: www.gmccbrexithub.com](http://www.gmccbrexithub.com)

[Follow us on twitter: @GMCCTradeTeam @gmchamber](#)

Disclaimer

This presentation has been put together based on information and guidance available from official and trusted sources and our understanding/interpretation of it.

We can not be held liable should there be any errors related to guidance which was sourced from 3rd parties. Whilst we have made every effort to check the accuracy of these, we can not make any guarantees.

