

# Welcome

Free Bitesize Sessions – CE Marking / UKCA Marking

23<sup>rd</sup> September 2021



Greater Manchester  
Chamber of Commerce



# Greater Manchester Chamber of Commerce

**Nicola Smith**

**Director at Squire Patton Boggs**



Greater Manchester  
Chamber of Commerce



# What will be covered today?

---

1. Brief introduction to GM Chamber & International Trade Services
2. Topics covered in presentation.....



# GM Chamber at a Glance



## Founded

In 1794 and became the Greater Manchester Chamber in 2004. We are the largest accredited Chamber of Commerce in the UK.

## 10 Local Authorities

Bolton, Bury, Trafford, Wigan, Tameside, Oldham, Rochdale, Stockport, Manchester, Salford.



## +4,200

Members across all sectors and sizes representing about 5% of the businesses in the region & combined workforce of circa +460,000 employees.



## +50

Employees



## +200 Events annually

Gathering over 10,000 delegates



## Award-Winning Chamber

Providing a wide range of business support services ranging from skills to international trade and more.



## Global Business Network (+90 countries)

Made of more than +40 partnerships with public and private sector in the UK and overseas helping members and customers to thrive in both domestic and international markets.



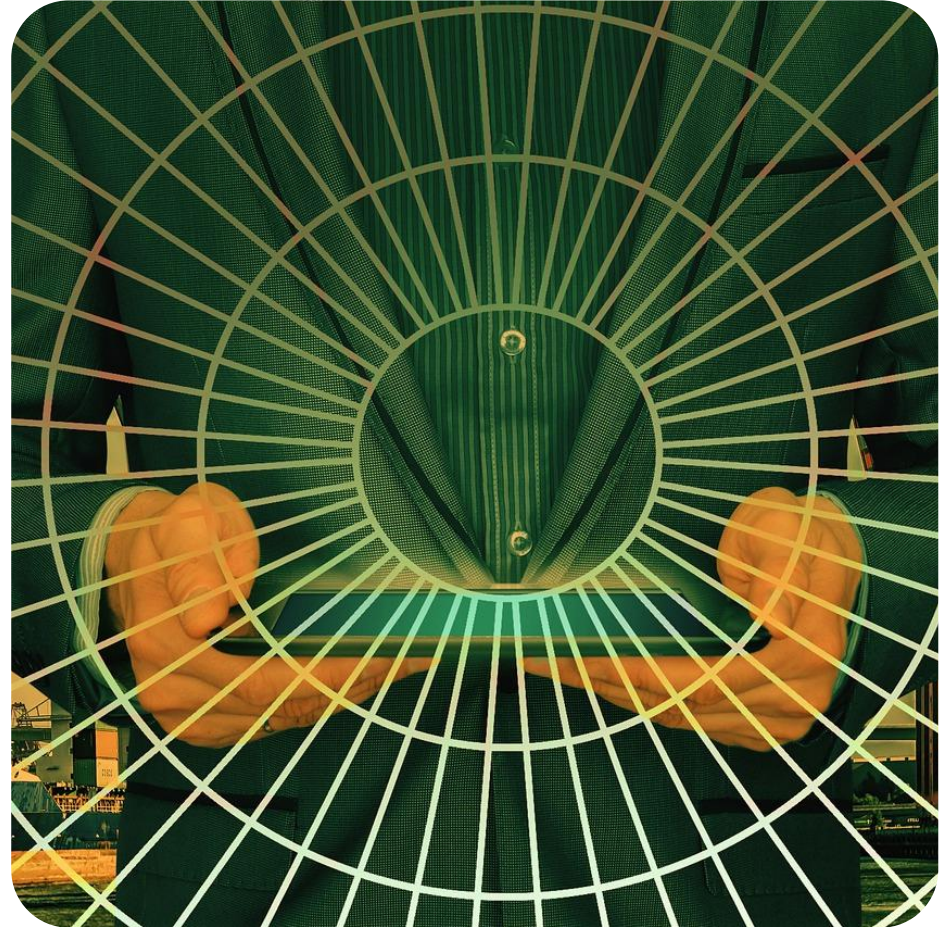


Greater Manchester  
Chamber of Commerce

CHAMBER  
CUSTOMS

# Your International Trade & Customs Partner

Helping Exporters and Importers Succeed in  
Global Markets



# How can we support?

Our portfolio of services have been designed to support every stage of the trader's internationalisation journey.

Getting Started and Planning for Success!

1

Market Awareness  
and Entry Services

2

Export and Import  
Training Courses

3

Customs Compliance  
Advisory Services



# How can we support?

Our portfolio of services have been designed to support every stage of the trader's internationalisation journey.

Customs, Delivery and Getting Paid!

4

Documentation,  
Certification,  
Legalisation & Apostille  
Services

5

Customs Clearance  
Agent & Transit  
Services

6

Delivery & Getting  
Paid Services



## 2021 Upcoming Events

---

28 <sup>th</sup> September	<u><a href="#">Training: Inward and Outward Processing Relief</a></u>
5 <sup>th</sup> October	<u><a href="#">Training: Trading with Turkey</a></u>
7 <sup>th</sup> October	<b><u><a href="#">Bitesize Session: The Points-Based Immigration System</a></u></b>
8 <sup>th</sup> October	<u><a href="#">Training: Rules of Origin – Preferential and Non-Preferential</a></u>
12 <sup>th</sup> October	<u><a href="#">Training: Shipping Routes 2021</a></u>
13 <sup>th</sup> October	<u><a href="#">Training: International Supply Chain Resilience</a></u>
19 <sup>th</sup> October	<u><a href="#">Training: How to Complete Customs Declarations</a></u>
21 <sup>st</sup> October	<b><u><a href="#">Bitesize Session: Moving Goods Temporarily with and ATA Carnet</a></u></b>
26 <sup>th</sup> October	<b><u><a href="#">Lanzarote: Your Remote Working Platform to Grow Your Business in Spain</a></u></b>
28 <sup>th</sup> October	<u><a href="#">Training: Export Documentation</a></u>
2 <sup>nd</sup> November	<u><a href="#">Training: Export Customs Procedures and Documentation</a></u>
18 <sup>th</sup> November	<b><u><a href="#">Bitesize Session: EU VAT Obligations for eCommerce Sellers</a></u></b>
19 <sup>th</sup> November	<u><a href="#">Training: Incoterms</a></u>
1 <sup>st</sup> December	<u><a href="#">Training: Import Procedures</a></u>
2 <sup>nd</sup> December	<u><a href="#">Training: UK Certificate of Origin Step-by-Step Workshop</a></u>

To keep up with our upcoming events, please click [here](#)





# POLL NO. 1

What would you say describes best your company's export experience?



# Product Marking and Labelling: The impact of Brexit



Greater Manchester  
Chamber of Commerce  
Connect. Communicate. Create.

23 September 2021

- CE Mark / UKCA Mark
- UK Declaration of Conformity
- Economic operator status / name and address
- Enforcement



# Conformity Assessment Markings

UK  
CA

OR

C  
E



- Affects products 'placed on the market' in GB from 1 January 2021, and which previously had to be CE marked
- The replacement mark is 'UKCA' (UK conformity assessment)
- As at 1 January 2021, UKCA standards/conformity assessment was identical to CE (because part of the exit process was that on exit day UK law would be essentially the same as the EU law and most EU laws retained, subject to minor amendments)
- The UK guidance specifically says (about standards) that "there are no UK plans to diverge at this time"
- Transitional period until ~~31 December 2021~~ - 31 December 2022 can continue to use the CE mark or you can use the UKCA mark, or both  
\*\* Amended 24 August 2021 \*\*
- Subject to some exceptions.....

- Exceptions to the general rule are:
  - Products being placed on the market in Northern Ireland - must retain the CE mark (but you can add the UKCA mark if you want to)
  - If your product is for the GB market (England, Scotland, Wales) **and** has not already been fully manufactured before 2021, **and** requires third party conformity assessment as part of its CE process, **and** that assessment was done by a UK assessment body, **and** you haven't transferred that to an EU body before the end of 2020.....**THEN** your CE certification is invalidated so you would need to use the UKCA mark straight away from January 2021.
  - If the EU changes the relevant standards during 2021 or 2022, so they are different to the UK ones, and you CE mark according to the updated CE rules, you will not be able to continue to use that CE assessment/mark in the GB market.

**UK  
NI**

- ~~Up to 1 January 2023:~~
  - ~~For most goods, can affix UKCA mark to label affixed to the product or accompanying document~~ \*\* Amended 24 August 2021 \*\*
- From 1 January 2023:
  - UKCA Mark Required. Updated guidance confirms, though, that the government will introduce legislation so that the UKCA marking can be placed on a label affixed to the product or on a document accompanying the product until 31 December 2023
- From 1 January 2024: In most cases UKCA mark must be affixed to the product
- But further exceptions:
  - Construction products, medical devices, interoperability of the rail system and transportable pressure equipment are covered by the UKCA marking, but the transitional provisions do not apply
- Final note:
  - Importance of 'placing on the market'

- Similar to EU Declaration of Conformity
- Required for products with UKCA marking
- Declares product compliance with relevant UK legislation and UK designated standards for the product
- Manufacturer and Conformity Assessment body details included



## Note:

- Manufacturer and importer responsibilities for CE Mark and UKCA Mark



# Brexit: Economic Operator Status / Name and Address

- As a result of Brexit:
  - EU-based customer previously a 'distributor' will become 'importer' of products shipped from GB into the EU market
  - UK-based customer previously a 'distributor' of goods manufactured in EU will become 'importer' of products from EU into the GB market
- Changing 'Economic Operator' Status = New Responsibilities
- Requirements for Name and Address of Importer



- In EU, enforcement of product safety and labelling laws is under national legislation
- Enforcement approaches can vary: Pro-active vs. re-active
- Varying penalties and enforcement mechanisms
- BUT Product Compliance Network database of enforcement data under Market Surveillance Regulation may result in more coordinated approach
- UK Enforcement



# Contact Details

---



**Nicola A. Smith**

Director

T +44 121 222 3230

O +44 121 222 3000

F +44 870 460 2915

M +44 777 172 6555

E [nicola.smith@squirepb.com](mailto:nicola.smith@squirepb.com)

# Product Marking and Labelling: The impact of Brexit



23 September 2021

# POLL NO. 2

What have you considered in terms of customs declarations with the EU?



# POLL NO. 3

How have you found the movement of goods since 1<sup>st</sup> Jan 2021?



YOUR  
FEEDBACK

HELP US IMPROVE FOR  
FUTURE EVENTS



# Q&A





# Disclaimer

---

This presentation has been put together based on information and guidance available from official and trusted sources and our understanding/interpretation of it.

We can not be held liable should there be any errors related to guidance which was sourced from 3<sup>rd</sup> parties. Whilst we have made every effort to check the accuracy of these, we can not make any guarantees.



# Need support?

## **General Export & Import Queries**

[exportbritain@gmchamber.co.uk](mailto:exportbritain@gmchamber.co.uk); [benefits@gmchamber.co.uk](mailto:benefits@gmchamber.co.uk)

## **Customs Clearance & Transit Services**

[chambercustoms@gmchamber.co.uk](mailto:chambercustoms@gmchamber.co.uk)

T: 0161 393 4368, 4317, 4355

## **Documentation, Certification, Legalisation and Apostille services**

[exportdocs@gmchamber.co.uk](mailto:exportdocs@gmchamber.co.uk)

T: 0161 393 4312, 4313

T: 0161 489 3170 (Airport Office)

[For more information about our International Trade Services, click here](#)

[For Brexit Guidance, Resources and Events, visit: www.gmccbexithub.com](http://www.gmccbexithub.com)

[Follow us on twitter: @GMCCTradeTeam @gmchamber](#)